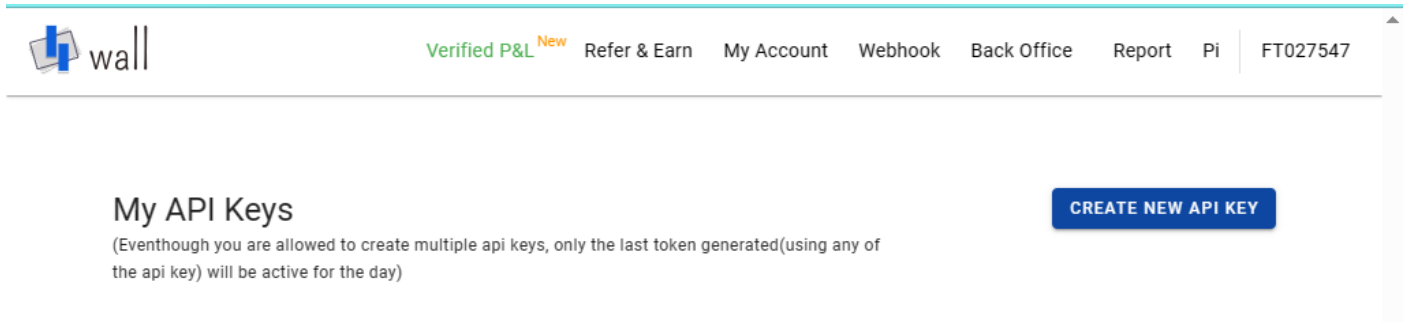


FLATTRADE

1. Login to Wall <https://wall.flattrade.in>



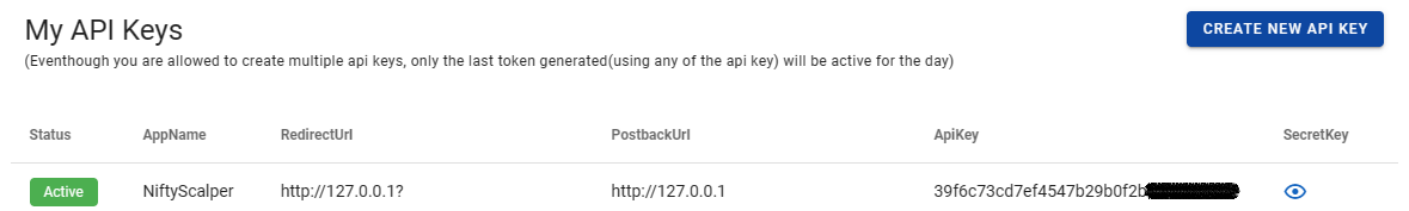
2. Navigate to Pi in top menu bar and click on “CREATE NEW API KEY”



3. Use the following values to enter the form.

App Name	NiftyScalper
App ShortName	NiftyScalper
Redirect URL	localhost
Description	NiftyScalper

4. Your API key is now generated



5. Copy the API KEY

6. Click the eye icon  to view the secret key. Copy secret key

7. Next, Login to Terminal <https://web.flattrade.in>

FLATTRADE

User ID

FT027547

Password

.....

OTP/TOTP

.....

Login

[Get OTP](#)[Forgot Password?](#)

8. Navigate to Profile > Security and, click on TOTP

FLATTRADE

DashboardOrdersPositionsHoldingsMarginsMarket | FT027547

SUSHANTH KURDEKAR

Light ThemeDark ThemeLogout

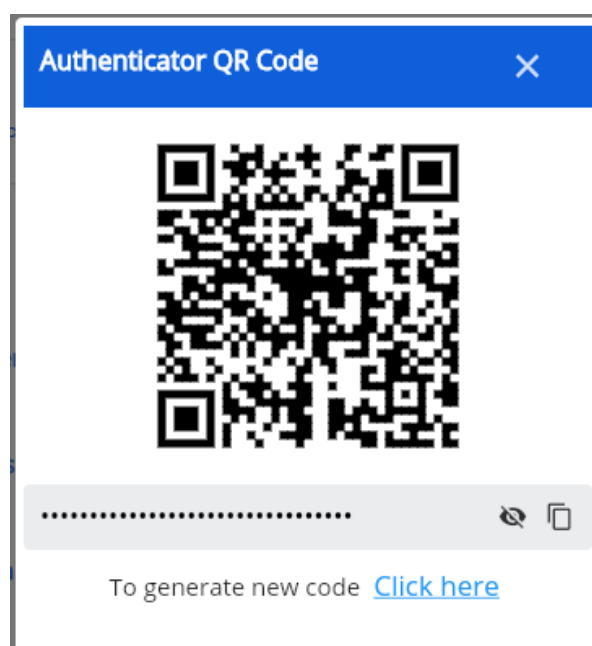
Account Details

Security

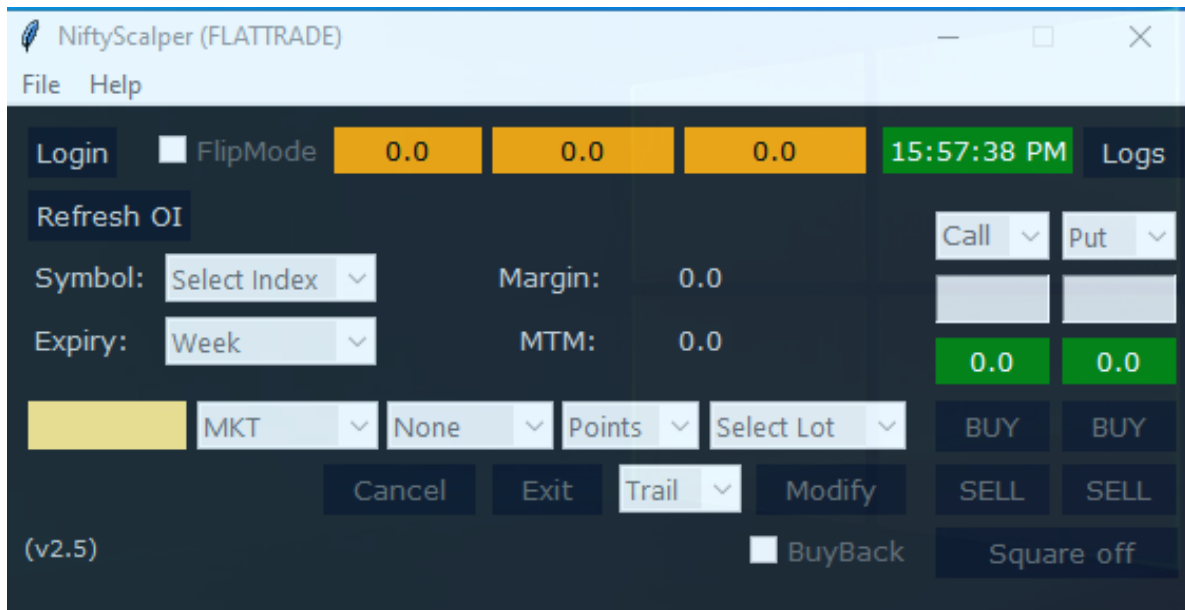
Change Password

TOTP

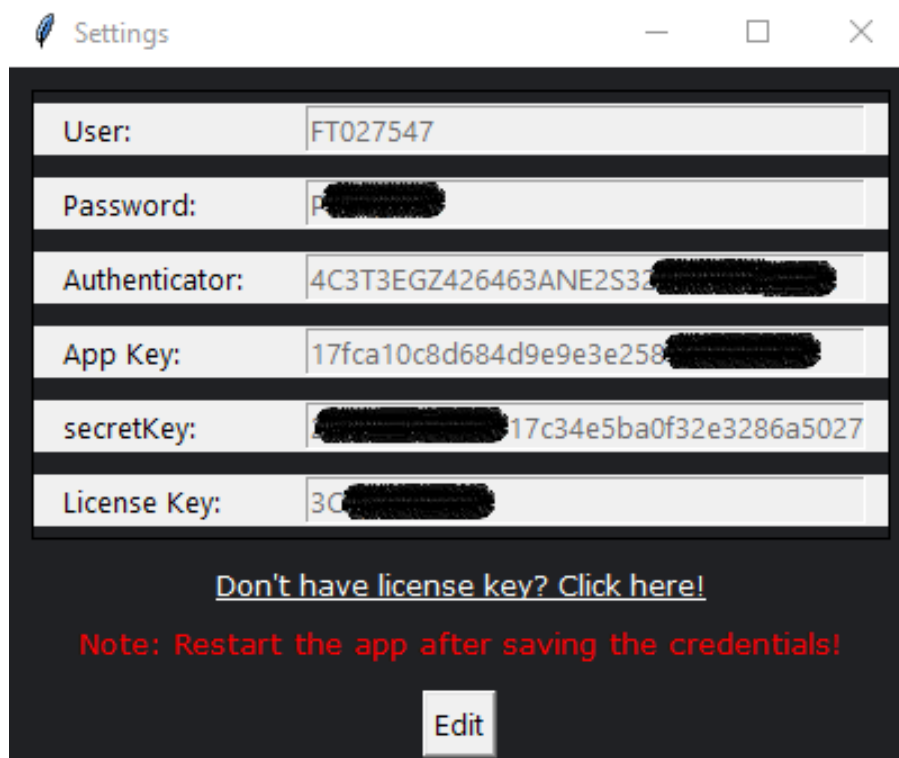
9. Copy the QR code.



10. Now after getting all the details Go to file > Settings in NiftyScalper from the top left Menu.



11. Click on edit and enter your credentials such as client ID, API key and API secret.



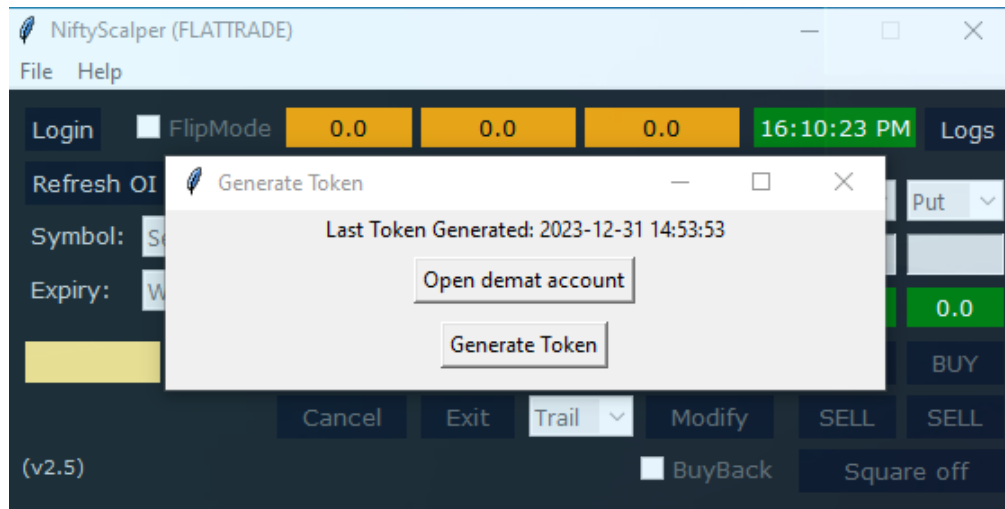
If you don't have a license key, Click on the link below.

[Generate License key](#)

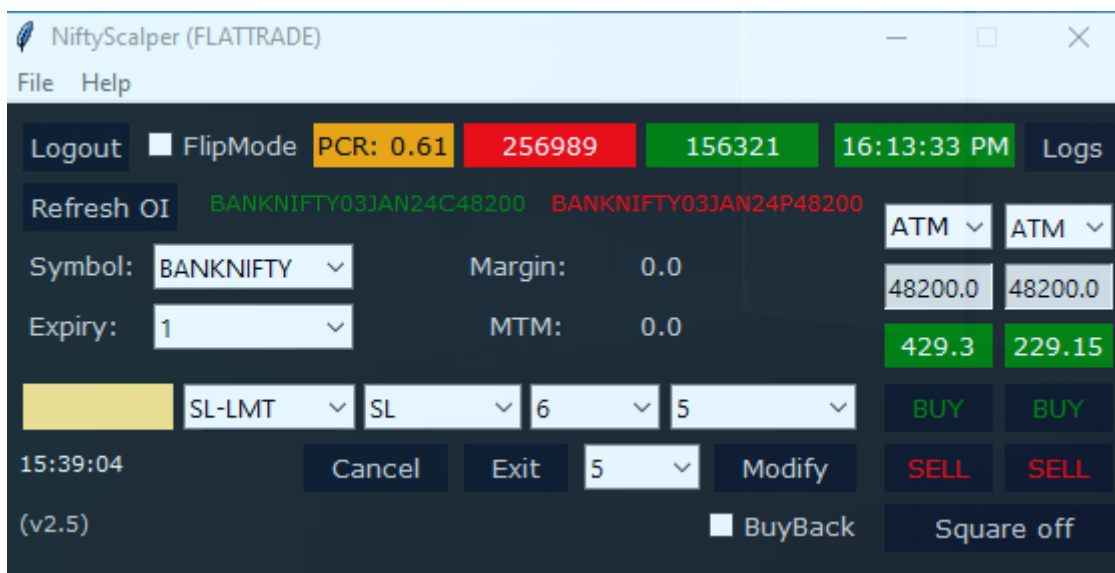
12. Click on save.

Congrats, Now you are good to go with FLATTRADE.

13. Go to File > and click on Generate token to login with Flattrade via NiftyScalper.



14. Now you can login with your Flattrade account.



Follow the Links:

Website Link: <https://www.logicalbee.in> & <https://apps.logicalbee.in>

YT Channel: <https://www.youtube.com/@logicalbee>

Telegram: <https://t.me/logicalbee>

Twitter: <https://twitter.com/abeesblog>

Instagram: <https://www.instagram.com/logicalbee/>

Email: sushanth@logicalbee.in